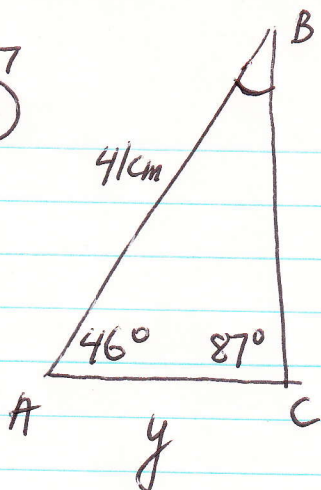


GEOM. ch 12.3 p. 637-638 Total 10 points

#7  
(5p)

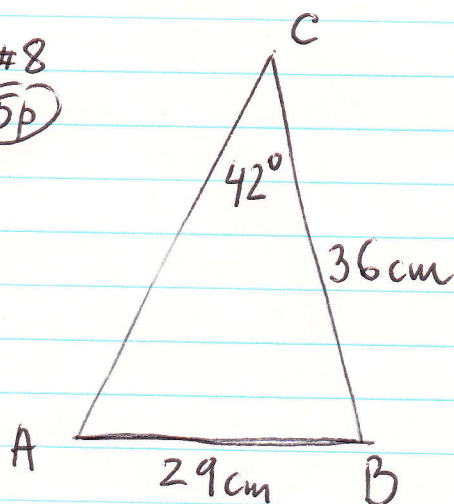


$$\angle B = 180^\circ - (46^\circ + 87^\circ) = 47^\circ$$

$$\frac{\sin 87^\circ}{41} = \frac{\sin 47^\circ}{y}$$

$$\frac{1}{41} \approx \frac{0.73}{y} ; y = \frac{41 \cdot 0.73}{1} = \underline{\underline{30 \text{ cm}}}$$

#8  
(5p)



$$\frac{\sin 42^\circ}{29} = \frac{\sin A}{36}$$

$$\sin A = \frac{36 \cdot \sin 42^\circ}{29}$$

$$= \frac{36 \cdot 0.67}{29} = 0.832$$

$$\sin A = 0.832 \quad \sin^{-1} A = \sin^{-1}(0.832) = \underline{\underline{56^\circ}}$$